

Quria - a Library Services Platform

MAGDALENA OLOFSSON



axiell

Marshall Breeding

librarytechnology.org

Smart Libraries Q&A: Differences between ILS and LSP

The technical architecture of library services platforms follows the modern approach of software-as-a-service with the following characteristics.

Note that while many vendors promote their hosting services for legacy systems as SaaS, there are important technical distinctions.



axiell

- Multitenant platform able to support all libraries using the product on a **single instance** of the system
- A single code-base so that **all organizations use the same version** of the software
- **Hosted by the vendor** or (or its hosting provider)
- Software updates are deployed at regular intervals with **no technical installation** routines required by users.
- **Native web interfaces** for all staff and patron features
- **Flexible metadata structures** able to describe different formats of content
- Ability to **separate institutional data** as needed
- Ability to **aggregate data** as needed
- **API's** exposed for all or at least most system functions and data elements
- **Access to native database** tables is generally **not permitted in** multitenant environments.
- Access to operating systems or other underlying components **not provided to non-developers**



- Acquisitions and cataloging workflows that accommodate electronic and print resources and their associated business and legal frameworks
- Integrated knowledge bases for the managing electronic resources at the product or portfolio level rather than as individual journal titles
- Workflows following multiple procurement models: Subscriptions to electronic resources, selection of open access materials, management of article payment charges, demand-driven acquisitions, purchase of physical materials

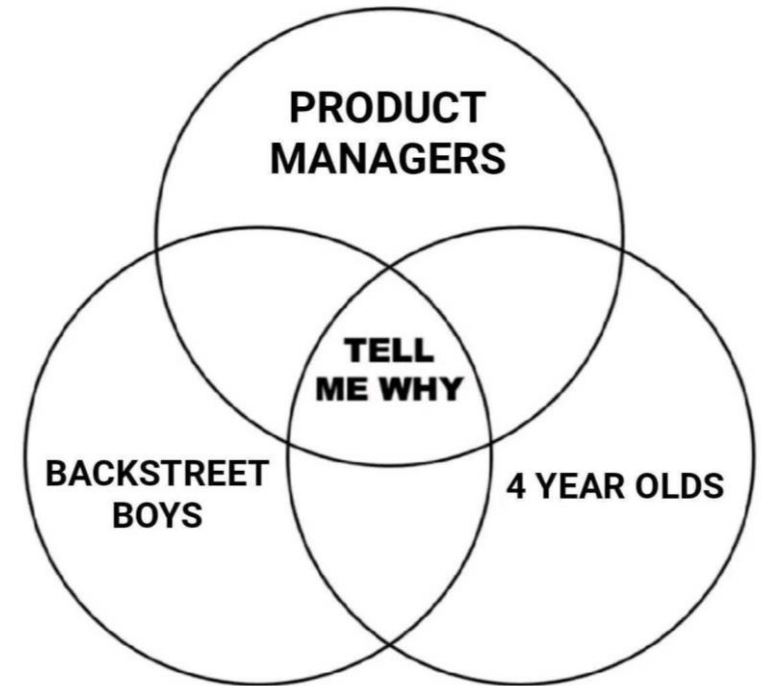


- **Patron engagement**
 - Arena
 - Library App
 - Quria School/Welib
- **Event management**
 - Event calendar and seat booking tool for library events
- **Federated search**
 - Transforms Arena to **Quria Discover**
- **Linked data**
- **Case management (2024)**
 - Efficient handling of communication between patrons and the library



Creating of a LSP for public libraries means that we need to

- Understand the bigger picture
- Focus on generic workflows
- Analyze every requirement from many angles
- Avoid development that adds unnecessary complexity.
- Learn by doing
- Face and solve unexpected challenges



Quria Installation Base

Status October 2023:

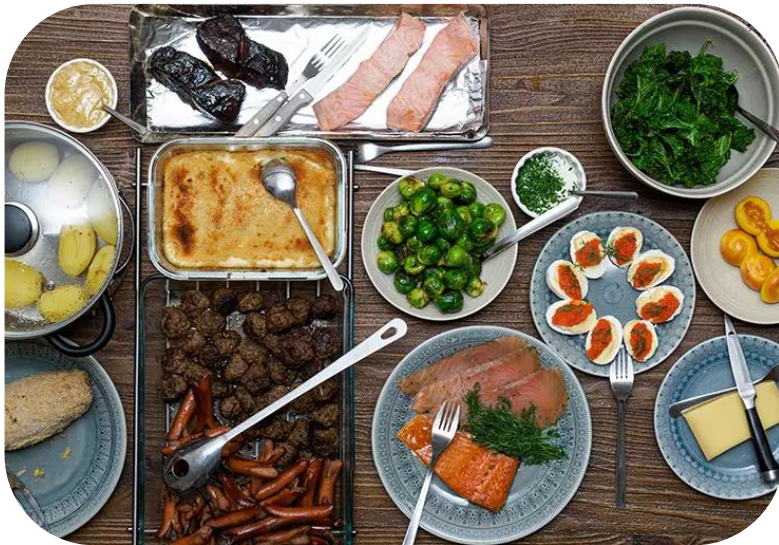
161 institutions live

42 in implementation

Total > **200** under contract



The past year!



Quria Digital Agreements

Mobile shelf list

New rules

Layout settings for various receipts

Temporary items

Acquisitions : Discounts, links to invoices from subscriptions, budget control when adding requisition

Patrons: More than one active e-mail, present debt id

Bill export in Json

Data export for use in 3rd party BA tools

RFID integrations

Component parts -

Payment methods

Block types

Infrastructural changes with huge improvement of general performance

Finland!



Quria Digital Agreements

- An opportunity to get rid of paper agreements between the library and the patrons!



Next release - 14 November 2023

Bulk search

Works, expressions and manifestations

Search for works, expressions and manifestations with different criterias

RDA compliance

Possibility to add multiple creators on works by introducing the concept of additional creators.

RFID

Integration to MK Solutions/Tagvision staff stations

Report groups for e.g. yearly statistics

A possibility to configure and run grouped reports that can be reused in a simple way to minimize the work each time. Examples: yearly statistics to national institutions and monthly reports to the municipality

Postal code groups for Analytics

In order to support many libraries needs to report active patrons divided into "own municipality" and "other municipalities", it will be possible to define different groups within the framework of Analytics/Settings to group the patrons geographically, for example a group called "Own municipality" and then you specify which postcodes are included in this delimitation.



Sustainable solution for analytical reports

- Create needed reports – this is where the most effort lies– but only once!
- Gather them in one group
- Sort in best order
- Run at new year in one go and get them sorted in the chosen order
- Save the files and wait until it's time to fill in the report

+

Postal code groups! For use to separate patrons from different municipalities or other geographical grouping, in analytical reports



Bibliotekkortet

Mål 1: Brukeren skal på sikt kunne bestemme sikkerhetsnivå for autentisering selv

- Överenskommelse med NB om att de bygger en inloggningsservice som vi implementerar i Arena
- Låntagare som i NL bestämmer att de inte vill bruke en pinkod kommer inte kunna logga in med lånekort+pin i Arena

Mål 2: Bibliotekansatte skal først få tilgang til fulle opplysninger om en nasjonal låner når hen er tilknyttet biblioteket

- Endast namn, fødselsedatum, kön och lånekort visas när man har slagit upp en låntagare i samband med nyregistrering.
- Kortet med “Mer information” visas som read-only och all data är maskerad
- När låntagaren sparas hämtas all information in och visas för den ansatte. Om man registrerar en låntagare manuellt fungerer allt som tidigare.

Mål 4: Kvalitetssikring av opplysninger om brukerne

Gäller låntagarnas adresser.

Specifikationsarbeite pågår



Roadmap 2024

Bibliotekskortet

SRU: K10plus

Bulk WEM actions

Authorization of subjects

Improved reservation cooperation

OAI-PMH improvements

Print labels from Collection/Items

Continuous RDA compliance work

Settings for administration of the self registration form in Arena

System notifications to Quria users

EKZ Standing orders

Floating collections

Permissions for configuration

Quria Case management

Intended audience



Tack för mig!



axiell